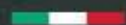


DIANA 450

Carbon fiber gangway

EXIT
CARBON

BETTER
YACHTING



MADE IN ITALY

www.exitcarbon.com

DIANA 450

Carbon fiber **folding** gangway

With male pin, wheels on a safe rigid caster, dock side eye bolts for trapeze and guys. Integral carbon hinges with anti-folding restraint.

Signature UV protected carbon fiber finishing with grey non-slip tread finish.

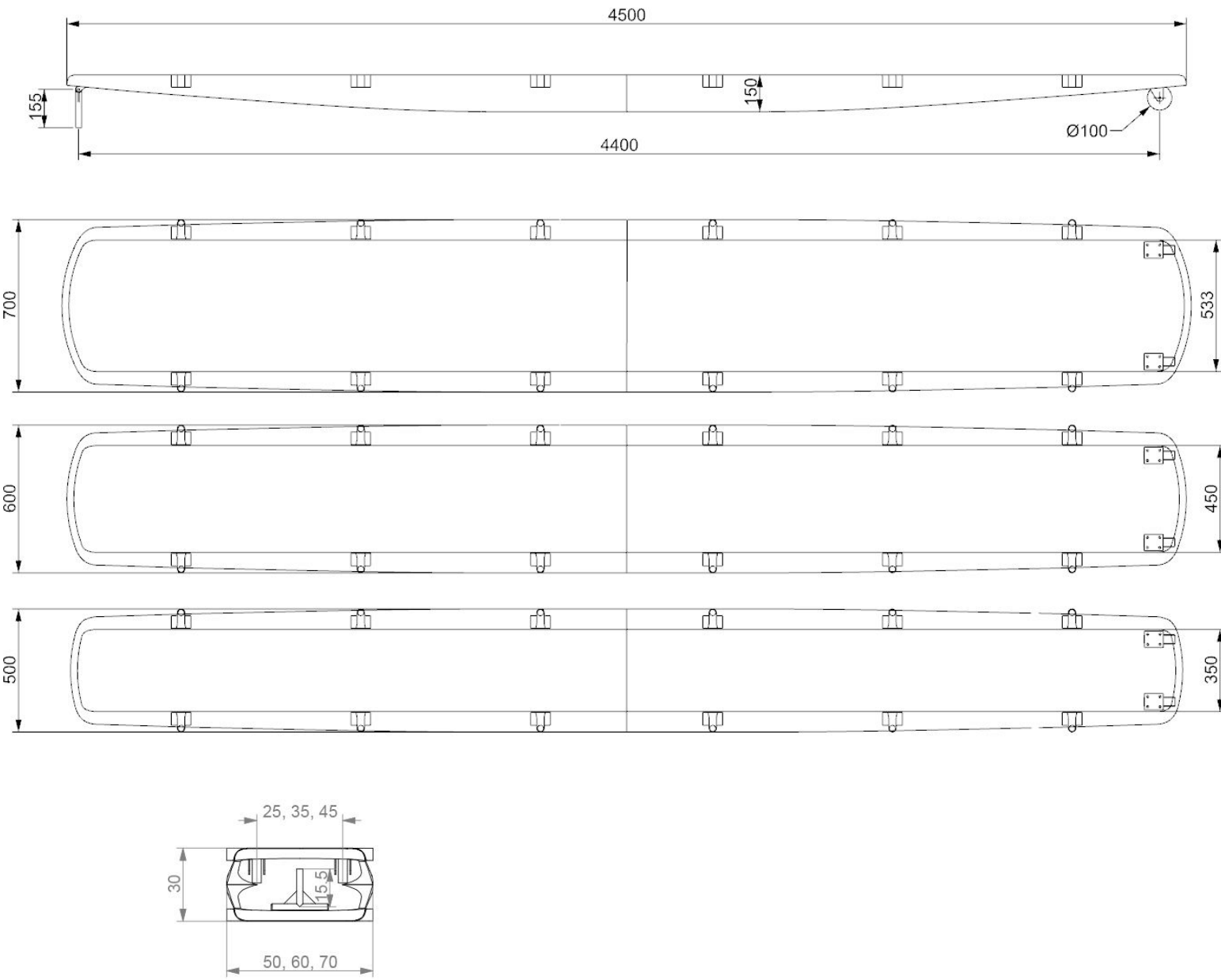
Spare parts kit included.

TECHNICAL DATA

Length open/close	450 / 226 cm
Width	50, 60, 70 cm
Weight	14 Kg to 21,5 Kg
Max load	800 Kg



DIANA 450



Female Deck Sockets

Fittings

The most comprehensive range of **deck sockets** for your gangway. All come with an impeccable highly polished deck flange. A complete set of adapters is available to couple any pivot with any socket, up to 34 mm diameter.

Finishing

We made no compromises: from surfaces polished in the same workshops used by Vicenza's famous gold jewelers, to solid CNC machining, this is the absolute best you can buy.

Pic. 1 STAINLESS STEEL

High quality, AISI316 welded socket with polished flange.

Pic. 2 PREMIUM STAINLESS STEEL- available also in BLACK HARD ANODIZED ALUMINIUM

A single block of AISI316 steel CNC machined for the smoothest effect.

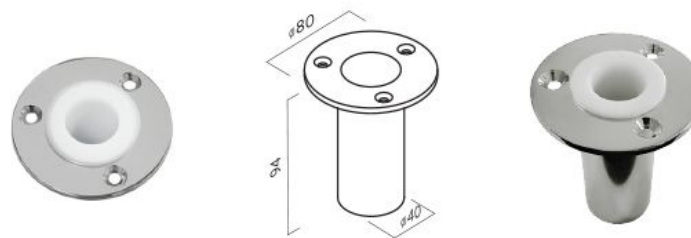
Pic. 3 PREMIUM STAINLESS STEEL WITH KEY-LOCK - available also in BLACK HARD ANODIZED ALUMINIUM

With marine grade lock and key It needs a special bushing on the male pin.

Pic. 4 PREMIUM STAINLESS STEEL SQUARE FLANGE

Perfect to be installed on narrow toe rails.

Pic. 1



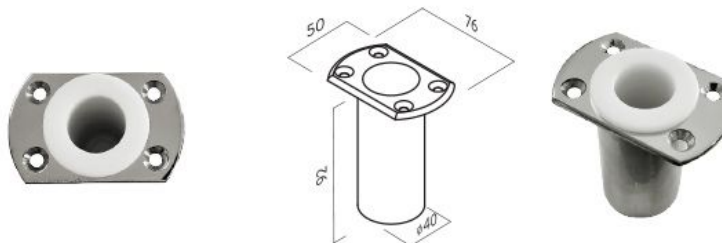
Pic. 2



Pic. 3



Pic. 4



Options

Custom Painting

Gangways, swim ladders, walking surfaces, wheels, sun awning poles, can be painted in different colors. Please refer to the table to choose your color combination.

Our standard non-slip surface color is *RAL 7036 Platinum Grey*.



RAL 7015 Slate Grey	RAL 3004 Purple
AWLGRIP N1101 Whisper Grey	RAL 8001 Ochre Brown
RAL 7036 Platinum Grey	RAL 1019 Grey Beige
RAL 7044 Silk Grey	AWLGRIP N6103 Desert Sand
AWLGRIP N8102 Oyster White	RAL 7032 Pebble Grey
AWLGRIP G8009 Off White	AWLGRIP N5103 Majestic Blue
AWLGRIP G8044 Snow White	RAL 5013 Cobalt Blue
	AWLGRIP N5100 Aristo Blue
	AWLGRIP N5110 Navy Blue
	AWLGRIP N5106 Royal Blue

For an unlimited choice of color, please contact us, explaining your needs.

Options

Teak Walking Surface

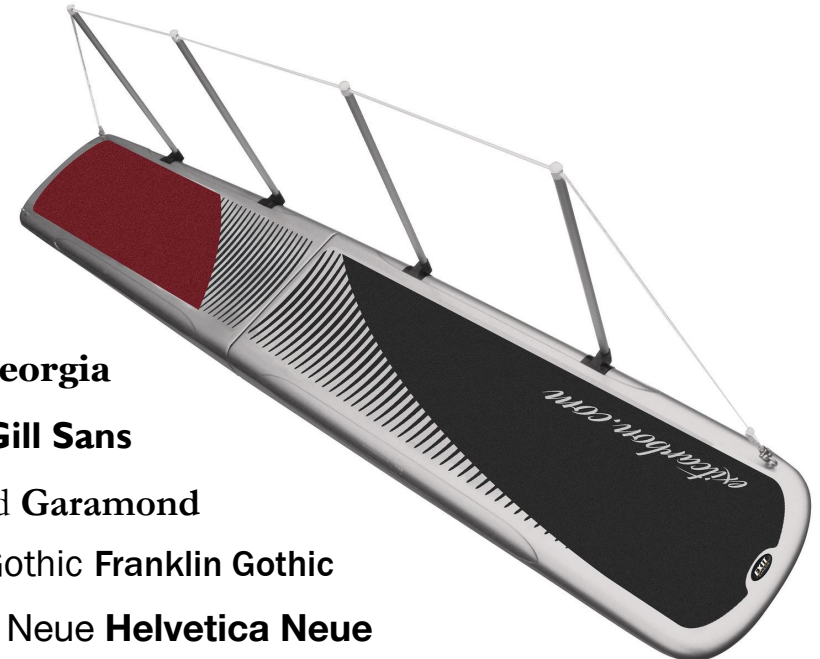
Our teak walking surface is 100% hand-made and follows the elegantly rounded gangway design. We use high-quality, 10 mm sheets of teak. The combination of classic teak and modern carbon technology creates a stand-out accessory for your yacht: beautiful, strong, and surprisingly light.



Yacht Name

You can customize your gangway with your logo, yacht name, or a drawing. Our best selling option is the name/logo visible within the non-slip surface, but it can also be painted in any color different from the main color of the gangway, even metallic.

A range of 5 different fonts (Helvetica Neue, Gill Sans, Franklin Gothic, Georgia, Garamond) constitutes the basic configuration for the yacht name. Any other font, logo or drawing is also possible: just send us your **vectorial file, .ai, .dxf, or just the font type** and we will recreate the same graphics on the gangway.



Georgia **Georgia**

Gill Sans **Gill Sans**

Garamond **Garamond**

Franklin Gothic **Franklin Gothic**

Helvetica Neue **Helvetica Neue**

Options

Handrail

Handrails are a great addition to your gangway. They give a clear view of your path, providing safety. Our handrail kits include hard anodized aluminium stanchions, comfortable polyester lines, and stainless steel spring lock.

They are easy to install by inserting the sliders in the recessed sockets below the gangway, until the spring lock clicks. Just pull on the slider to remove. You can customize colors for your rope and stanchions.

Our handrail kits can be added to any gangway at any time.



Padded Stow Bag

Provide the best protection for your Exit Carbon piece of equipment - and your yacht too - with our exclusive, Exit Carbon weatherproof padded stow bags.

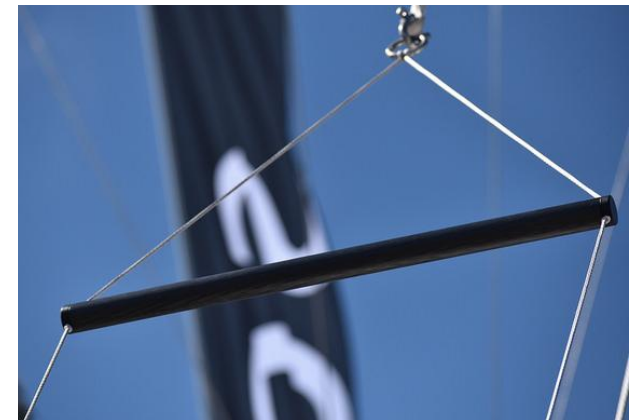
All our bags feature resistant and comfortable handles, shoulder straps, practical zips, and can be customized with your logo or yacht name.



Trapezes

A trapeze is the perfect solution for keeping your gangway readily available without the noise of the wheels scratching on the dock or worries about the gangway hitting the dock. Most trapezes are made with short spreader bars, resulting in an uncomfortably narrow passage when you walk through. We made our **Carbon Spreader Bars** 610 mm long--wider than most shoulders--but still extra light.

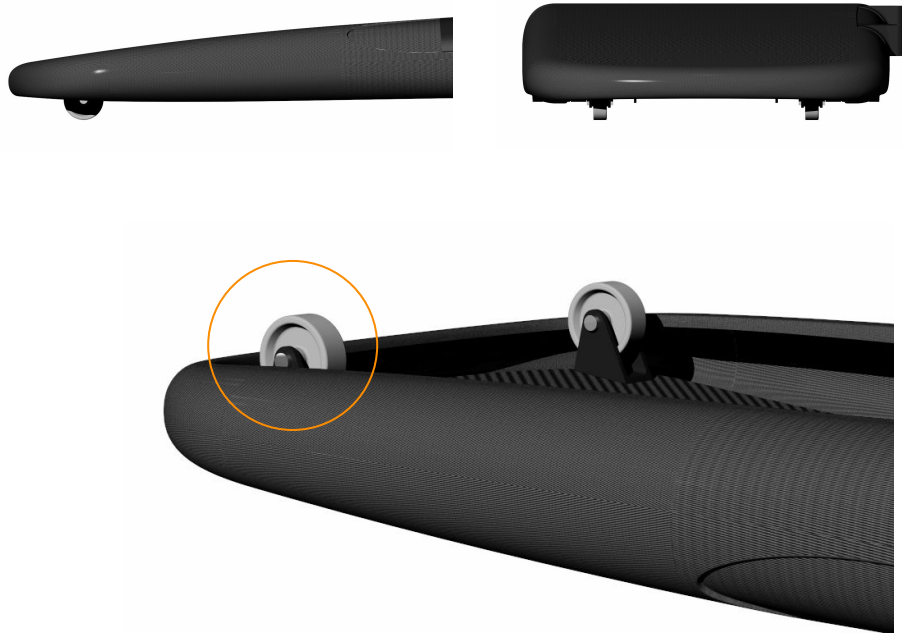
Carbon Spreader Bar, Full Trapeze, and Full Trapeze with Lateral Guys available.



X-Wheels Option

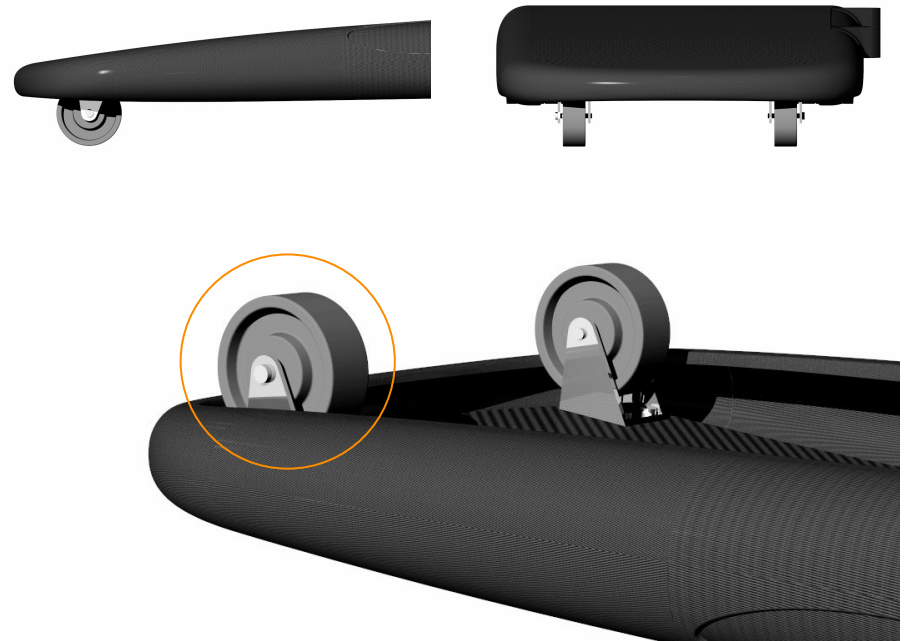
Standard Wheels

Our standard, discreet, 63 mm diameter wheels on hard anodised aluminium rigid casters permanently fixed to the carbon structure. They don't spoil the smooth flowing lines of the gangway, but allow the natural movement of the ship while you cross the gangway.



X-Wheels

Big, heavy-duty 100 mm diameter X-Wheels on AISI316 stainless steel rigid casters for additional clearance from the dock or use on irregular surfaces. The casters are screwed on extra-strong stainless steel threaded plates and laminated inside the carbon fiber structure--like the fittings of Formula 1 engines and suspensions.



DIANA 450

Carbon fiber super yacht folding gangways

MODELS	LENGTH	WIDTH	MAX LOAD	WEIGHT		PRICE
Diana 450	450 cm (14'9")	50 cm	800 Kg	16.5 kg	*	€ 20,470
Diana 450 W		60 cm		19.5 kg	*	€ 22,010
Diana 450 XW		70 cm		21.5 kg	*	€ 23,550
Anna 500	500 cm (16'6")	50 cm	900 Kg	21.5 kg	*	€ 21,763
Anna 500 W		60 cm		25.5 kg	*	€ 23,303
Anna 500 XW		70 cm		28.5 kg	*	€ 24,843
Elisa 550		50 cm		23.5 kg	*	€ 23,060
		60 cm		27.5 kg	*	€ 24,600
	550 cm (18'1")		1.000 Kg			
Elisa 550 W						
Elisa 550 XW		70 cm		31.5 kg	*	€ 26,140
Laura 600		50 cm		26.5 kg	*	€ 24,355
Laura 600 W	600 cm (19'8")	60 cm	1.100 Kg	30.5 kg	*	€ 25,895
Laura 600 XW		70 cm		34.5 kg	*	€ 27,435

FINISHING

High gloss transparent UV protected coating as standard. Platinum Elegance grey non-slip tread finish RAL 7036, standard on the whole range.

CONFIGURATION

With male pin, standard wheels dock side and eye bolts for trapeze and guys. Carbon integral hinges with anti-folding restraint. Spare parts kit included.
Extra large diameter X-Wheels available on option.

Fittings for all gangways (pins, sockets, and trapezes)

Male pin with 50 mm offset	€300
Stainless steel welded female socket	€110
Premium stainless steel female socket (machined)	€198
Machined black hard anodized aluminium female socket	€110
Stainless steel female socket with locking system (machined)	€412
Black hard anodized aluminium female socket with locking system (machined)	€300
Stainless steel toe rail female socket (squared) (machined)	€480
60 cm carbon spreader bar (for your own trapeze)	€154
Trapeze system with 60 cm carbon spreader bar (Spectra lines, SS hardware)	€363
Trapeze system with 60 cm carbon spreader bar and lateral guys (Spectra lines, SS hardware)	€533
Lateral guys for trapeze (Spectra lines, SS hardware)	€170
Lateral guys for trapeze (Dyneema lines, SS carabiner, blocks and cleats)	€ 300
X Wheels (100 mm diameter, extra wide dock wheels on solid caster). <i>Only available on bigger models.</i>	€390

All our Female deck sockets are provided with a polymer sleeve.

*Prices in Euro. VAT and shipping not included.

©Exit Engineering 2022

Handrail kits

	PRICE Calipso Aurora Venus	PRICE Libera	PRICE Allegra	PRICE Diana Anna	PRICE Elisa Laura
Hard anodised handrail kit	€430	€800	€900	€1,300	€1,700
Handrail supports on other side	€330	€660	€700	€1,000	€1,200
Handrail kit choice of color	€140	€275	€275	€420	€550

Handrail kit not available on ALBA 220 cm solid gangway.

Stow bags

	PRICE Alba	PRICE Calipso Aurora	PRICE Venus Libera	PRICE Allegra	PRICE Diana Anna	PRICE Elisa Laura
Waterproof rail fitted bag (with adjustable straps)	€300	-	-	-	-	-
Padded stow bag for folding gangway	-	€300	€412	€473	€700	€828

Finishing options

	PRICE Alba Calipso Aurora	PRICE Venus Libera	PRICE Allegra	PRICE Diana Anna	PRICE Elisa Laura
Gangway high gloss clear coat	€220	€275	-	-	-
Gangway matt clear coat	€220	€275	€390	€470	€660
Gangway choice of color (within our 17 tones color range)	€330	€385	€500	€580	€770
Gangway choice of any other color	€440	€495	€610	€690	€990
Non-slip tread choice of color (within our 17 tones color range)	€220	€330	€390	€440	€550
Non-slip tread custom color (provide RAL or Awlgrip code)	€330	€440	€500	€550	€660
Yacht's name	€245	€355	€390	€460	€460
Gangway metallic choice of color	€550	€610	€720	€800	€990
Teak surface	€2,057	€2,783	€3,146	€4,235	€5,445

Choices of color

High gloss clearcoat - Matt clearcoat - Slate Grey - Whisper Grey - Platinum Grey - Silk Grey - Oyster White - Off White - Snow White - Purple - Ochre Brown - Grey Beige - Desert Sand - Pebble Grey - Majestic Blue - Cobalt Blue - Aristo Blue - Navy Blue - Royal Blue - Any kind of RAL or Awlgrip code

www.exitcarbon.com

EXIT CARBON IS MANUFACTURED

by **EXIT ENGINEERING**

For more details, please send us an email at info@exitcarbon.com

HEADQUARTERS

Via Industria, 43 30010 - Camponogara (VE) Italy - +39 041 89 48 038

