

A high-angle photograph of a white boat with a blue hull and a red, white, and blue stripe. The boat has a wooden deck and a red flag. A black carbon fiber folding gangway is extended from the boat. The gangway has two sections with a light gray top and a black side. The boat is docked at a wooden pier. The water is dark blue.

Aurora 216 carbon fiber folding gangway



MADE IN ITALY

EXIT
CARBON

BETTER
YACHTING

www.exitcarbon.com

AURORA 216

Carbon fiber **folding** gangway

Aurora 216 has super stiff, high inertia, a carbon fiber shell structure, which also integrates its exclusive carbon hinges. Aurora reaches the maximum stiffness with minimum weight, to assure a walking comfort and safety.

Aurora will bend only an astonishing 0.7 cm for each 100 kg of weight, and weighs about 6 kg.

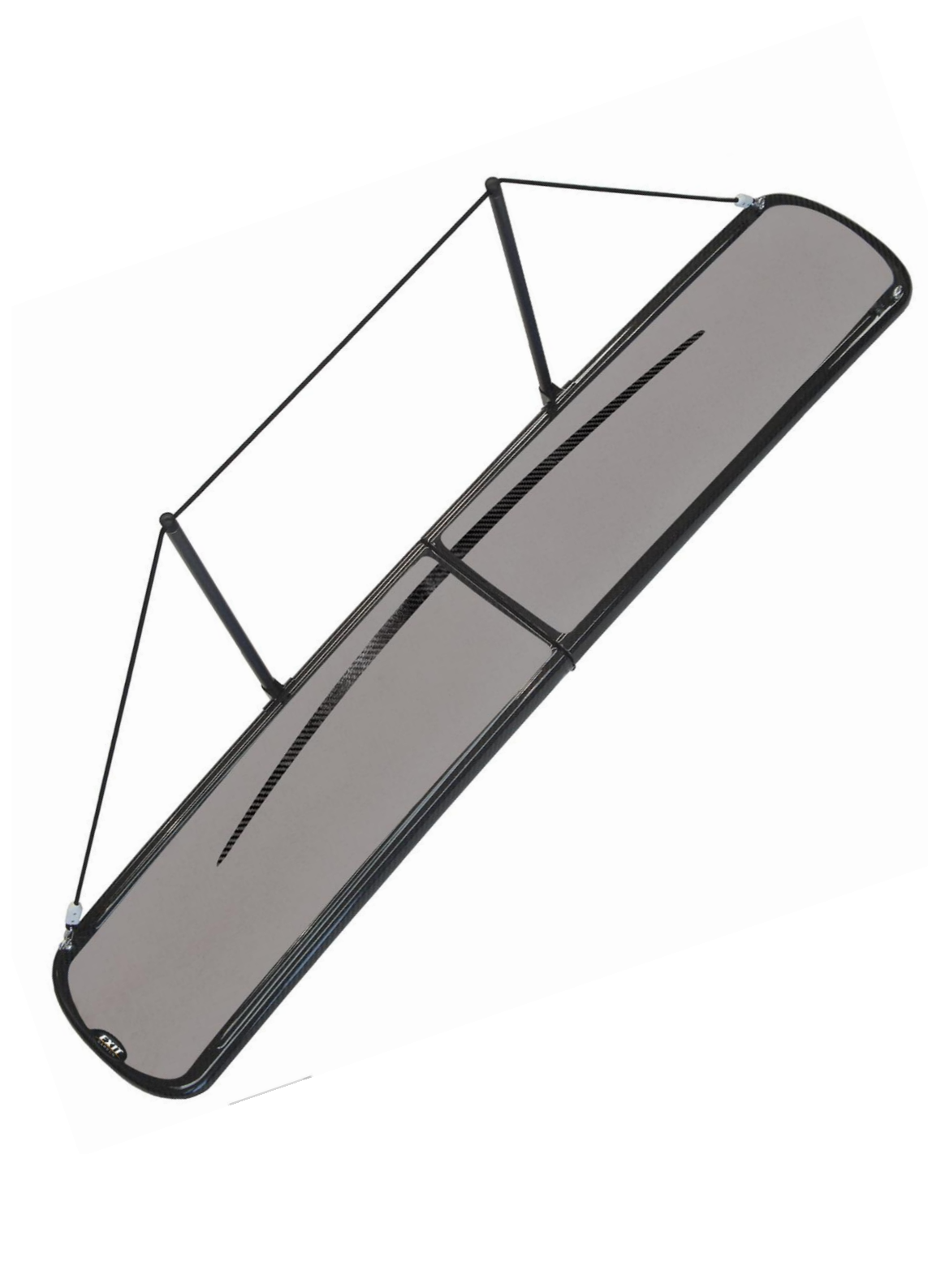
With male pin, wheels on a safe rigid caster, dock side eye bolts for trapeze and guys. Integral carbon hinges with anti-folding restraint.

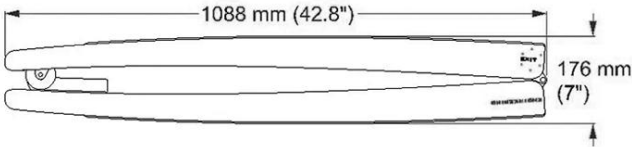
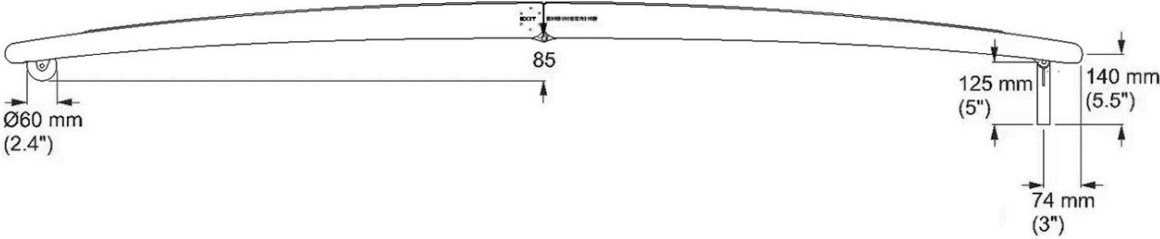
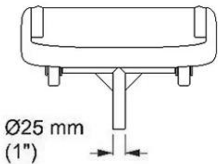
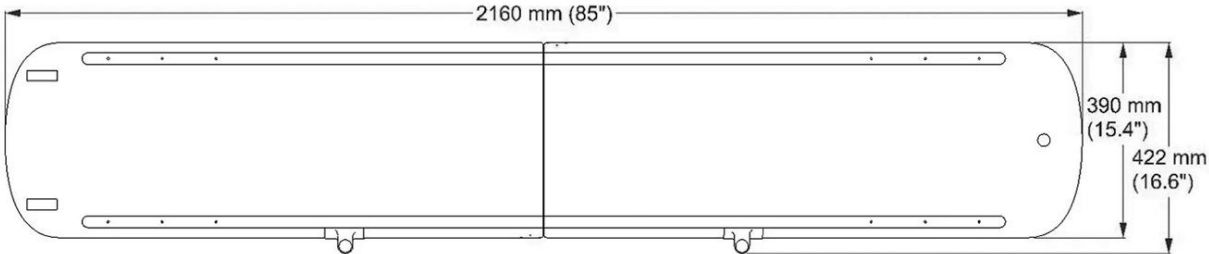
Signature UV protected carbon fiber finishing with grey non-slip tread finish.

Spare parts kit included.

TECHNICAL DATA

Length open/folded	216 / 108.8 cm
Width	39 cm
Weight	6 Kg
Max load	500 Kg





Female Deck Sockets

Fittings

The most comprehensive range of **deck sockets** for your gangway. All come with an impeccable highly polished deck flange. A complete set of adapters is available to couple any pivot with any socket, up to 34 mm diameter.

Finishing

We made no compromises: from surfaces polished in the same workshops used by Vicenza's famous gold jewelers, to solid CNC machining, this is the absolute best you can buy.

Pic. 1 STAINLESS STEEL

High quality, AISI316 welded socket with polished flange.

Pic. 2 PREMIUM STAINLESS STEEL- available also in BLACK HARD ANODIZED ALUMINIUM

A single block of AISI316 steel CNC machined for the smoothest effect.

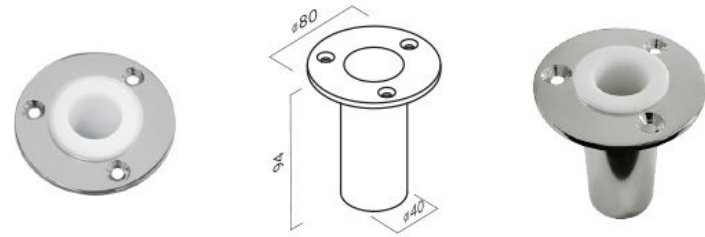
Pic. 3 PREMIUM STAINLESS STEEL WITH KEY-LOCK - available also in BLACK HARD ANODIZED ALUMINIUM

With marine grade lock and key It needs a special bushing on the male pin.

Pic. 4 PREMIUM STAINLESS STEEL SQUARE FLANGE

Perfect to be installed on narrow toe rails.

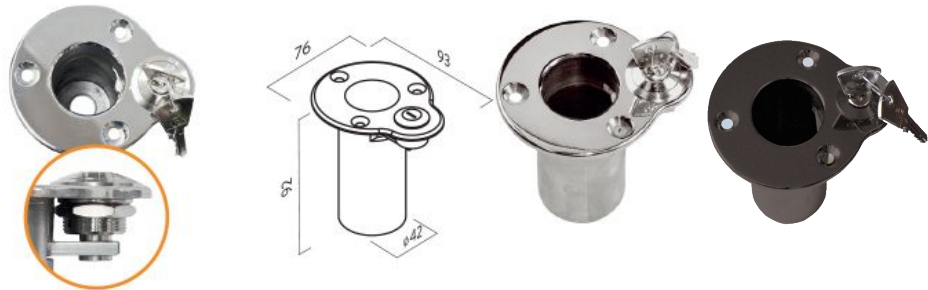
Pic. 1



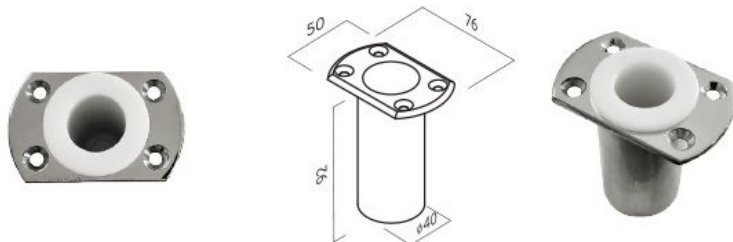
Pic. 2



Pic. 3



Pic. 4



Options

Custom Painting

Gangways, swim ladders, walking surfaces, wheels, sun awning poles, can be painted in different colors. Please refer to the table to choose your color combination.

Our standard non-slip surface color is *RAL 7036 Platinum Grey*.



RAL 7015 Slate Grey	RAL 3004 Purple
AWLGRIP N1101 Whisper Grey	RAL 8001 Ochre Brown
RAL 7036 Platinum Grey	RAL 1019 Grey Beige
RAL 7044 Silk Grey	AWLGRIP N6103 Desert Sand
AWLGRIP N8102 Oyster White	RAL 7032 Pebble Grey
AWLGRIP G8009 Off White	AWLGRIP N5103 Majestic Blue
AWLGRIP G8044 Snow White	RAL 5013 Cobalt Blue
	AWLGRIP N5100 Aristo Blue
	AWLGRIP N5110 Navy Blue
	AWLGRIP N5106 Royal Blue

For an unlimited choice of color, please contact us, explaining your needs.

Options

Teak Walking Surface

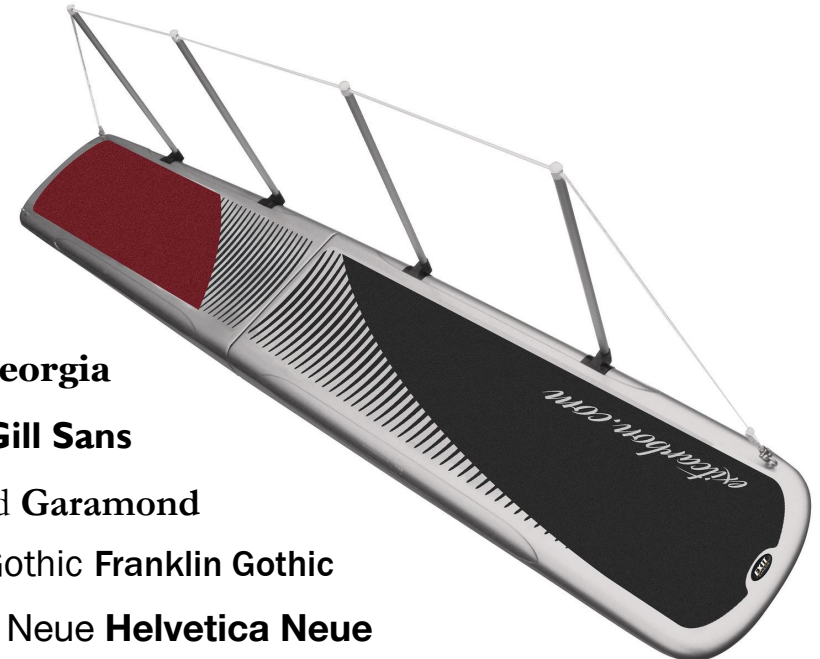
Our teak walking surface is 100% hand-made and follows the elegantly rounded gangway design. We use high-quality, 10 mm sheets of teak. The combination of classic teak and modern carbon technology creates a stand-out accessory for your yacht: beautiful, strong, and surprisingly light.



Yacht Name

You can customize your gangway with your logo, yacht name, or a drawing. Our best selling option is the name/logo visible within the non-slip surface, but it can also be painted in any color different from the main color of the gangway, even metallic.

A range of 5 different fonts (Helvetica Neue, Gill Sans, Franklin Gothic, Georgia, Garamond) constitutes the basic configuration for the yacht name. Any other font, logo or drawing is also possible: just send us your **vectorial file, .ai, .dxf, or just the font type** and we will recreate the same graphics on the gangway.



Georgia **Georgia**

Gill Sans **Gill Sans**

Garamond **Garamond**

Franklin Gothic **Franklin Gothic**

Helvetica Neue **Helvetica Neue**

Options

Handrail

Handrails are a great addition to your gangway. They give a clear view of your path, providing safety. Our handrail kits include hard anodized aluminium stanchions, comfortable polyester lines, and stainless steel spring lock.

They are easy to install by inserting the sliders in the recessed sockets below the gangway, until the spring lock clicks. Just pull on the slider to remove. You can customize colors for your rope and stanchions.

Our handrail kits can be added to any gangway at any time.



Padded Stow Bag

Provide the best protection for your Exit Carbon piece of equipment - and your yacht too - with our exclusive, Exit Carbon weatherproof padded stow bags.

All our bags feature resistant and comfortable handles, shoulder straps, practical zips, and can be customized with your logo or yacht name.



Trapezes

A trapeze is the perfect solution for keeping your gangway readily available without the noise of the wheels scratching on the dock or worries about the gangway hitting the dock. Most trapezes are made with short spreader bars, resulting in an uncomfortably narrow passage when you walk through. We made our **Carbon Spreader Bars** 610 mm long--wider than most shoulders--but still extra light.

Carbon Spreader Bar, Full Trapeze, and Full Trapeze with Lateral Guys available.



Carbon fiber yacht gangways

MODELS	LENGTH	WIDTH	MAX LOAD	WEIGHT	PRICE
Alba 220	220 cm / solid (7' 2")	39 cm	500 Kg	4.4 Kg	€2,940
Calipso 216	Open: 216 cm Folded: 108,8 cm / (7' 1")	39 cm	400 Kg	8 Kg	€3,284
Aurora 216	Open: 216 cm Closed: 108,8 cm / folding (7' 1")	39 cm	500 Kg	6 Kg	€4,825
Venus 285	Open: 285 cm Closed: 184 cm / folding (9' 4")	45 cm	400 Kg	12 Kg	€4,940
Libera 285	Open: 285 cm Closed: 184 cm / folding (9' 4")	45 cm	500 Kg	8.5 Kg	€6,120
Allegra 350	Open: 350 cm Closed: 176 cm / folding (11' 6")	60 cm	500 Kg	16.8 Kg	€7,885

CONFIGURATION

With male pin, standard wheels dock side and eye bolts for trapeze and guys.
Carbon integral hinges (**) with anti-folding restraint.
Spare parts kit included.
(**) Calipso 216 and Venus 285 have high strength aluminum hinges.

FINISHING

Carbon fiber finishing and Grey non-slip tread, standard on the whole range.

Fittings for all gangways (pins, sockets, and trapezes)

Male pin with 50 mm offset	€300
Stainless steel welded female socket	€110
Premium stainless steel female socket (machined)	€198
Machined black hard anodized aluminium female socket	€110
Stainless steel female socket with locking system (machined)	€412
Black hard anodized aluminium female socket with locking system (machined)	€300
Stainless steel toe rail female socket (squared) (machined)	€480
60 cm carbon spreader bar (for your own trapeze)	€154
Trapeze system with 60 cm carbon spreader bar (Spectra lines, SS hardware)	€363
Trapeze system with 60 cm carbon spreader bar and lateral guys (Spectra lines, SS hardware)	€533
Lateral guys for trapeze (Spectra lines, SS hardware)	€170
X Wheels (100 mm diameter, extra wide dock wheels on solid caster). <i>Only available on bigger models.</i>	€815

All our Female deck sockets are provided with a polymer sleeve.

PRICE All gangways	PRICE Allegra Diana Anna Elisa Laura
--------------------	--------------------------------------

Handrail kits

	PRICE Calipso Aurora Venus	PRICE Libera	PRICE Allegra	PRICE Diana Anna	PRICE Elisa Laura
Hard anodised handrail kit	€430	€800	€900	€1,300	€1,700
Handrail supports on other side	€330	€660	€700	€1,000	€1,200
Handrail kit choice of color	€140	€275	€275	€420	€550

Handrail kit not available on ALBA 220 cm solid gangway.

Stow bags

	PRICE Alba	PRICE Calipso Aurora	PRICE Venus Libera	PRICE Allegra	PRICE Diana Anna	PRICE Elisa Laura
Waterproof rail fitted bag (with adjustable straps)	€300	-	-	-	-	-
Padded stow bag for folding gangway	-	€300	€412	€473	€700	€828

Finishing options

	PRICE Alba Calipso Aurora	PRICE Venus Libera	PRICE Allegra	PRICE Diana Anna	PRICE Elisa Laura
Gangway high gloss clear coat	€220	€275	-	-	-
Gangway matt clear coat	€220	€275	€390	€470	€660
Gangway choice of color (within our 17 tones color range)	€330	€385	€500	€580	€770
Gangway choice of any other color	€440	€495	€610	€690	€990
Non-slip tread choice of color (within our 17 tones color range)	€220	€330	€390	€440	€550
Non-slip tread custom color (provide RAL or Awlgrip code)	€330	€440	€500	€550	€660
Yacht's name	€245	€355	€390	€460	€460
Gangway metallic choice of color	€550	€610	€720	€800	€990
Teak surface	€2,057	€2,783	€3,146	€4,235	€5,445

Choices of color

High gloss clearcoat - Matt clearcoat - Slate Grey - Whisper Grey - Platinum Grey - Silk Grey - Oyster White - Off White - Snow White - Purple - Ochre Brown - Grey Beige - Desert Sand - Pebble Grey - Majestic Blue - Cobalt Blue - Aristo Blue - Navy Blue - Royal Blue - Any kind of RAL or Awlgrip code

www.exitcarbon.com

EXIT CARBON IS MANUFACTURED

by **EXIT ENGINEERING**

For more details, please send us an email at info@exitcarbon.com

HEADQUARTERS

Via Industria, 43 30010 - Camponogara (VE) Italy - +39 041 89 48 038

